

# Accurate News

Accurate Labs

"Accurate News" is a publication of Accurate Labs  
Stillwater, OK 74074

Main Office: 505 S. Lowry ■ Stillwater, OK 74074  
405-372-5300 ■ FAX: 405-372-5396

Volume: 1 Issue: 18



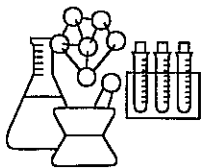
Oklahoma City: 405-236-5333 ■ Tulsa: 918-587-5300  
Enid: 405-237-5353 ■ Wichita: 316-683-1123

April-June 1998

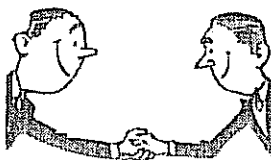
## OCC To Require MTBE Testing For Some RBCA Sites

Starting July 1, 1998, the Oklahoma Corporation Commission will require that the additional testing parameter Methyl tert-butyl ether (MTBE) be determined for tank investigations and site closures where the dig contacts groundwater. MTBE is an octane booster used in gasoline which causes the contaminated water to have a foul odor and taste. The EPA has set a regulatory limit of 20ppb (20ug/L) for MTBE. The amount of MTBE in the sample can be determined from the same two vials provided for BTEX and TPH(GRO) analysis. As with the sampling requirements for other volatile parameters, the vials provided for MTBE analysis should not contain headspace.

The concern for MTBE has risen from major groundwater contamination on the west coast, where MTBE was found to rapidly disperse through the ground. Currently, there is not an immediate health concern. The regulatory level listed above reflects a level known to affect the taste and smell of drinking water.



David Kidd  
Organics Manager



## Too Good To Be True?

Almost daily it seems I get a call from someone who tells me there is a laboratory that will do work for half our price, or even less. I know they are telling the truth. As the environmental testing market shrinks many labs are finding themselves on the brink of collapse. Often, their only hope is to generate quick cash flow by deep discounting.

There is only one problem with this. No company can do business below its cost for very long without going out of business. I personally know of several laboratories in Oklahoma, Kansas, and Texas that have closed their doors in recent months. Almost without exception they had begun deep discounting within the last year. It was no surprise to us to hear that they had closed.

Several of our customers were victimized by these labs. Often they were producing poor quality data as a result of the layoffs and turmoil that usually precede a closing. Also, when these labs closed they usually left customers hanging. The customers now had no data and no samples either. Please don't let yourself be victimized by one of these operations. Remember, if it sounds too good to be true...it probably is.

Dan Labus  
Marketing Manager



Check out the new calendar of important dates on our web site @ [www.accuratelabs.com/events.htm](http://www.accuratelabs.com/events.htm)



## Chain-of-Custody Notes from the QA/AC Coordinator



In my first few months as QA/QC Coordinator at Accurate Labs, I have had contact with many of you both directly and over the phone, and it has been a real pleasure talking with everyone. As summer rapidly approaches, I have noticed that there are a few common requests, which need to be clarified on the Chain-of-Custody before the sample can be run, which could mean costly delays to you.

**Total Petroleum Hydrocarbons:** TPH is a general test which measures both gasoline range organics (GRO), purged from vial, and diesel range organics (DRO), extracted from 1 liter of sample. Occasionally, a set of samples will arrive for TPH and a one-liter bottle is missing. When this occurs, the samples are kept from analysis until it is confirmed that only a partial test is needed, or that the missing bottle will be resampled later. In order to avoid needless confusion; please ask for "TPH (GRO)" and "TPH (DRO)" as separate parameters on the chain instead of listing "TPH." If only DRO is needed, then "TPH (DRO)" would be listed. This will assist our log-in staff to double-check that the sample containers they receive match the required parameters listed on the chain-of-custody. Remember GRO samples use a 40ml vial and DRO use a 1-liter bottle.

**Metals:** To help ensure that the list of metals reported to you is complete, please request specific metals or lists of metals on the chain. Listing "503 metals" or "RCRA metals" or listing the metals from your permit list would help eliminate the reporting of extra metals or too few metals on your final report.

**Semivolatiles:** Please be sure that requests for semivolatile organics are specific with regards to the types of compounds required for analysis. The word "semivolatile" can mean base/neutral & acid compounds, organochlorine pesticides, PCBs, chlorinated acid herbicides, or nitrogen and phosphorous pesticides. One liter of sample is required for each of these tests due to the different extraction techniques required. Please be sure to list the necessary semivolatiles for testing as "BNA,"

"Pest," "TTO," or "Table II." This will help assure that parameters are not missing from the final report. If you are not sure of your needs please call us.

The information on the chain-of-custody is very important; not only to the laboratory, but also in legally documenting that the proper tests were requested and performed. By clearly specifying these tests, we can better serve your needs. Should any questions or uncertainties arise regarding these or other analytical tests, just give us a call.

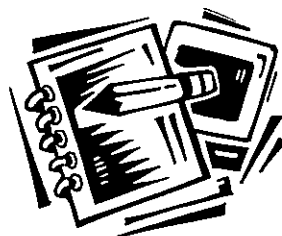
Ken Crawford  
QA/QC Coordinator

## ATC-Classes

The Accurate Training Center classes have been filling up fast with the annual deadline for renewal hours approaching. We would like to express our appreciation to everyone who makes advance enrollment and payment of tuition to the ATC classes. This helps us in providing better services to both the students and the employers. With advance enrollment and payment, ATC can plan for the classes better, redirect enrollment when classes near capacity, and acquire the equipment needed for each class.

Accurate Training Center is also proud to announce the coming of A, B, and C Level Training and Certification Classes. Supervisors and operators have been requesting these classes for a long time. The classes will provide ODEQ certification hours and requirements. Look for upcoming announcements and schedules for these classes or call Accurate Training Center's Training Administrator, Clarke Hodson, for current information. Clarke can be reached at 1-405-372-5300, 1-800-516-5227, or his e-mail address of [clarke-atc@accuratelabs](mailto:clarke-atc@accuratelabs). Visit our web page at [www.accuratelabs.com](http://www.accuratelabs.com).

~ Clarke Hodson  
Training Administrator





## New Oil & Grease Method

After what seems like years, the new Oil & Grease method (1664) is finally close to approval. The new method uses n-Hexane instead of Freon as the extraction solvent. It also requires a very rigorous QA/QC that method 413.1 did not. It is our opinion at Accurate that because of these changes this method will not be suitable for small labs that only run a few samples at a time.

If your in-house lab is running 413.1 right now and is thinking about continuing to do O&G using the new method please have them call and talk to us about 1664. There are many issues they need to consider before they attempt the method. We have spent several years developing 1664 and have found it to be much more difficult to achieve good results, and much more time consuming than the previous method. Also, the added QC requirements will make it very expensive unless full batches are run. There are many safety considerations with n-Hexane which did not exist with Freon as well. n-Hexane is more toxic than Freon and is very flammable. Many lab fires have been attributed to n-Hexane.

If your lab chooses not to use 1664 we will be glad to perform this analysis for you. If they do want to attempt the new method we will also be glad to give them any advice we can...so please feel free to call us.

George Drye  
Lab Manager

*\*Seminar on Oil & Grease Testing to be held in Dallas, Texas May 27, 1998. Please contact Accurate Labs for further information.*

## pH Important in Sample Preservation

Many tests call for preservation of samples with an acid or base. When an acid is used final pH should be 2 or less. When a base is used final pH should be 12 or greater. This preservation is critical to comply with regulatory requirements.

Accurate currently supplies prepreserved containers. These containers have enough acid/base in them to bring most samples into the desired pH range. However, when the sample has an extreme pH or a large buffer capacity the final sample pH may not be in the correct range and more preservative may be needed. Where possible the pH of these samples should be checked while in the field to determine if preservation is complete. If the laboratory checks the pH of a sample upon receipt, and it is found to be outside the desired range, rejection of the sample is a likely result. Even if the analysis is completed regulatory agencies might not accept the results as valid.

If you are aware that a particular sample matrix may require more than the normal amount of preservative please inform us in advance. Sample containers with more than the normal amount of preservative can be prepared for you, or in some cases extra preservative can be included in your sampling kit. Also, please be careful while filling these containers. The material used as preservative can cause rapid, painful skin burns if it is spilled while in its undiluted state. Also, the vapors of nitric and hydrochloric acid can be irritating to the eyes and lungs.

John Russell  
Field Service Manager

## Press Release

The honorable Loyd Benson, Oklahoma Speaker of the House of Representatives has named Dr. Ali Fazel, Owner and CEO of Accurate Labs & Training Center to be a Member of the Laboratory Services Advisory Council representing Private Laboratories. The appointment is for a three-year term expiring February 4, 2002, replacing Thomas Kelly. The pur-

pose of the council is to recommend rule changes to the Department of Environmental Quality regarding laboratory services and certification standards.

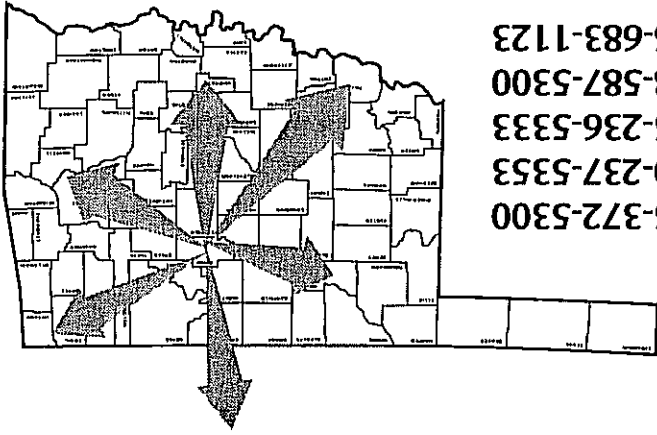


Dan Labus  
Marketing Manager

Accurate Labs

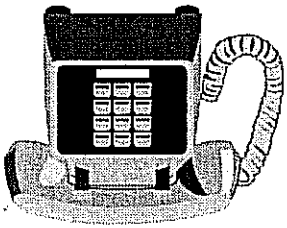


Accurate Labs will pick up your samples along seven statewide routes. Please call.



Stillwater  
Enid  
Oklahoma City  
Tulsa  
Wichita

405-372-5300  
580-237-5353  
405-236-5333  
918-587-5300  
316-683-1123



Accurate Labs



505 S. Lowry St.  
Stillwater, OK 74074

BULKRATE  
U.S. POSTAGE  
PAID  
STILLWATER, OK  
PERMIT NO. 189