

Forensic TPH Fingerprinting Density, Viscosity, Interfacial Tension

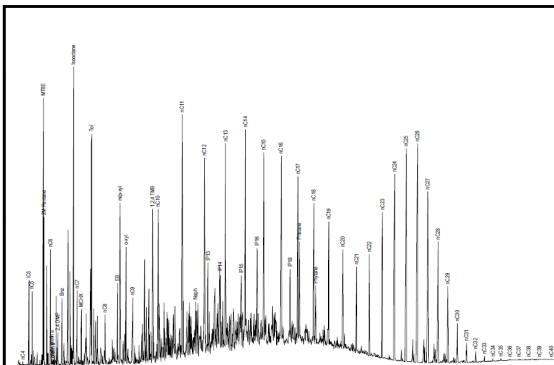
Accurate Environmental has been providing analysis for **Total Petroleum Hydrocarbon (TPH) Characterization** since January 2022. TPH Characterization, also called TPH Fingerprinting is a forensic geochemistry technique using gas chromatography (GC) analysis with a carbon range of C4 - C40. TPH Characterization is often used for evaluating releases of petroleum and petroleum products. Analysis can be done using free product samples, extracts from soils, and extracts from water. In addition, **Accurate Environmental** is now able to perform **Density, Viscosity and Interfacial Tension (Surface Tension)** for free product and water samples.

There are four main questions that TPH Characterization can answer:

- 1) What type of petroleum has been released?
- 2) What type and degree of weathering has the product experienced since release?
- 3) When was the product released?
- 4) How do nearby samples compare to each other?

When the analysis has been completed, **Accurate Labs** will send the client a report that includes a full-size chromatogram, as well as enlarged segments of the chromatogram showing more detailed views of the peaks for the identified contaminants along with the chain of custody for the samples. The client will also receive an Excel file with responses for each peak identified in the chromatogram.

For more information about TPH Fingerprinting, or any of **Accurate Labs'** comprehensive environmental services, contact **Danny Chance** at **(800) 516-5227** or email **Danny@accuatelabs.com**.



OPERATOR & LAB CLASS SCHEDULE

STILLWATER

SEPTEMBER

02	Open Exams
06-08	D W & WW Operator
26-29	C WW Laboratory

OCTOBER

04-06	D W & WW Operator
07	Open Exams
12-13	C W Operator
24-27	AB Water Laboratory

NOVEMBER

01-03	D W & WW Operator
04	Open Exams
09-10	C WW Operator
28-12/1	C W Laboratory

TULSA

SEPTEMBER

09	Open Exams
12-15	AB W Operator
19-21	D W & WW Operator

OCTOBER

10-11	C WW Operator
14	Open Exams
17-19	D W & WW Operator

NOVEMBER

07-08	C W Operator
11	Open Exams
14-16	D W & WW Operator

IMPORTANT!!!

Exam applications must be submitted to the ODEQ at least 3 weeks before your class.