

MARCH 2022
Issue 03.22.1



LABORATORY
SERVICES

www.accuratelabs.com

Laboratory • Training • Engineering • Field Services • Supplies

(800) 516 - 5227

Forensic TPH Fingerprinting Density, Viscosity, Interfacial Tension

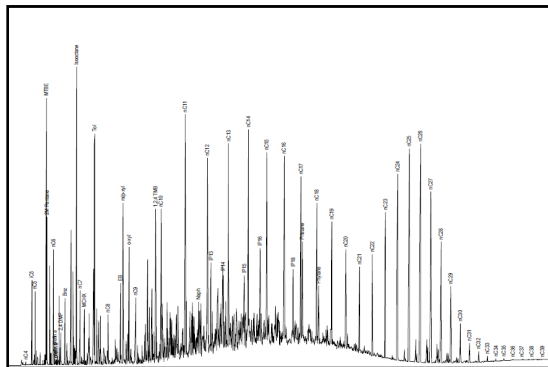
As of January 1st, 2022 **Accurate Environmental** acquired **Torkelson Geochemistry, Inc.** of Tulsa. The recent acquisition adds more capabilities to our already extensive list of environmental testing services. **Accurate Environmental** now provides analysis for **Total Petroleum Hydrocarbon (TPH) Characterization**. TPH Characterization, also called TPH Fingerprinting is a forensic geochemistry technique using gas chromatography (GC) analysis with a carbon range of C4 - C40. TPH Characterization is often used for evaluating releases of petroleum and petroleum products. Analysis can be done using free product samples, extracts from soils, and extracts from water. In addition, **Accurate Environmental** is now able to perform **Density, Viscosity and Interfacial Tension (Surface Tension)** for free product and water samples.

There are four main questions that TPH Characterization can answer:

- 1) What type of petroleum has been released?
- 2) What type and degree of weathering has the product experienced since release?
- 3) When was the product released?
- 4) How do nearby samples compare to each other?

When the analysis has been completed, **Accurate Labs** will send the client a report that includes a full-size chromatogram, as well as enlarged segments of the chromatogram showing more detailed views of the peaks for the identified contaminants along with the chain of custody for the samples. The client will also receive an Excel file with responses for each peak identified in the chromatogram.

For more information about TPH Fingerprinting, or any of **Accurate Labs'** comprehensive environmental services, contact **Danny Chance** at (800) 516-5227 or email Danny@accuratelabs.com.



OPERATOR & LAB CLASS SCHEDULE

STILLWATER

MARCH

01-03 D W & WW Operator
04 Open Exams
07-10 AB WW Laboratory
14-17 AB Water Operator

APRIL

01 Open Exams
05-07 D W & WW Operator
11-12 C W Operator
25-28 C W Laboratory

MAY

02-04 D W & WW Operator
05 Open Exams
09-10 C WW Operator
22-25 A/B WW Laboratory

TULSA

MARCH

11 Open Exams
22-24 D W & WW Operator

APRIL

08 Open Exams
13-14 C WW Operator
19-21 D W & WW Operator

MAY

11-12 C W Operator
13 Open Exams
17-19 D W & WW Operator
23-26 AB WW Operator

IMPORTANT!!!

Exam applications must be submitted to the ODEQ at least 3 weeks before your class.

3910 E. 51st St.
Tulsa, OK 74135

Headquarters
505 South Lowry St.
Stillwater, OK 74074

12036 N. Penn
OKC, OK 73102