

EPA Adding PFAS to Primary Contaminant List

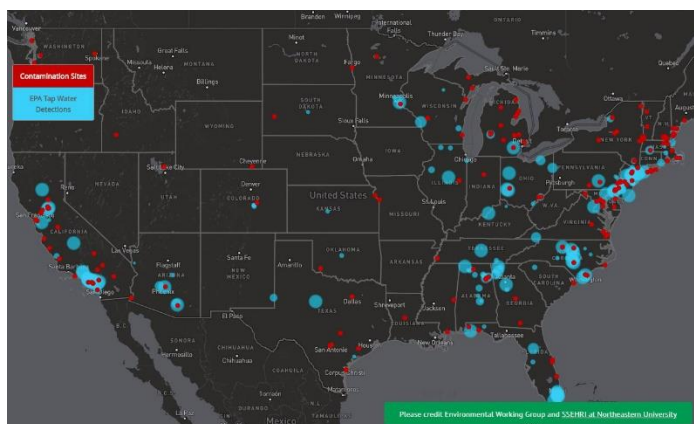
Per- and polyfluoroalkyl substances (PFAS) are a group of man-made chemicals that includes PFOA and PFOS. PFAS have been utilized in a variety of industries in the United States for more than 60 years. Both PFOS and PFOA can accumulate in the environment and in humans and there is evidence that exposure to PFAS can cause adverse human health effects including, but not limited to, liver damage, thyroid disease, decreased fertility, high cholesterol, hormone suppression and cancer. Exposure to PFAS compounds can come from many sources including food packaging, nonstick products such as Teflon, stain and water repellants as well as firefighting foams.

EPA recently announced that it is moving forward with its plan to start the maximum contaminant level (MCL) process for PFOA and PFOS. This action would require **all Public Water Systems to monitor for these two compounds**. Accurate Labs has been analyzing for PFAS compounds for **over 7 years** and is the **only lab in Oklahoma that is EPA certified for PFOS and PFOA analysis**. If you are unsure of your water quality, call Accurate Labs to find out.

For more information about PFAS testing, or any other environmental service needs, call **Danny Chance** at **(800) 516-5227** or visit us online at www accuratelabs.com.

Red Dots
Indicate PFAS contamination sites

Blue Dots
Indicate PFAS detection in tap water



ACCURATE OPERATOR CLASSES

STILLWATER CENTER

MARCH

- 01 Open Exams
- 05-07 D W & WW Oper
- 11-14 C Water Lab

APRIL

- 01-02 C WW Oper
- 05 Open Exams
- 09-11 D W & WW Oper
- 22-25 C WW Lab

TULSA CENTER

MARCH

- 08 Open Exams
- 19-21 D W & WW Oper

APRIL

- 03-04 C Water oper
- 12 Open Exams
- 15-18 A/B WW Oper
- 23-25 D W & WW Oper

****Don't forget to submit your exam application to ODEQ at least 3 weeks before the exam date!***

Three Accurate Labs & Training Center Locations in Oklahoma:

Tulsa
3910 E. 51st St.
918-663-5400

Stillwater (HQ)
505 S. Lowry St.
405-372-5300

Oklahoma City
12036 N. Penn
405-751-3132