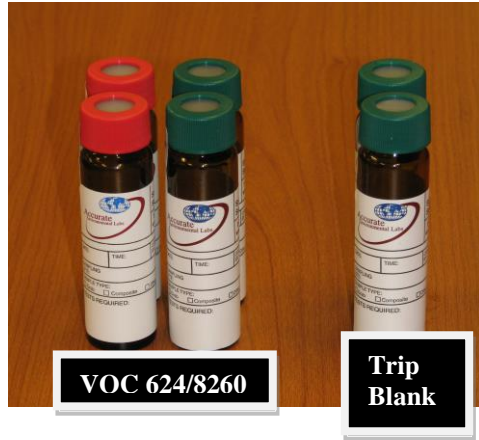


Collecting EPA METHOD VOC 624/8260

Bottle Requirements

2-40mL vials pres. HCL and
2-40mL vials pres. Na₂S₂O₃.



Sampling Instructions

Take caution with the preservative –it is caustic

Activities including pumping gas, working with oil or hydraulic fluid and smoking prior to sampling VOCs can result in a contaminated sample.

1. Fill the four 40 mL VOA vials until a reverse meniscus forms at the top without over flow (*see photo on the right*). Cap tightly and turn the bottle upside down and tap to ensure that there are **no air bubbles** present. If air is observed, uncap the vial and add a little sample until there is no air present in the vial.
2. The lab will not accept samples if air is present.
3. Label the sample bottles and fill out the COC.
4. Samples need to be kept at 4°C and, if possible, delivered to the lab the same day that they are taken.
5. All samples should be accompanied by a trip blank. The trip blank will be prepared at the laboratory & shipped with the sampling containers.



Do not open the trip blank!

Note: Holding Time is 14 days.



3 Locations in Oklahoma

Accurate – Stillwater

505 South Lowry Street Stillwater, OK 74074
Fax (405) 372-5396

Accurate – Tulsa

3910 E. 51st Street Tulsa, OK 74135
Fax (918) 663-6300

Accurate – OKC

12036 North Penn Ave. Okla. City, OK 73120
Fax (405) 751-3108

Need a quote or have questions?

***Call our toll free number (800) 516-LABS
or visit www accuratelabs.com***